

D U C T M A T E

ULTimate Door™

U.S. Patent Pending

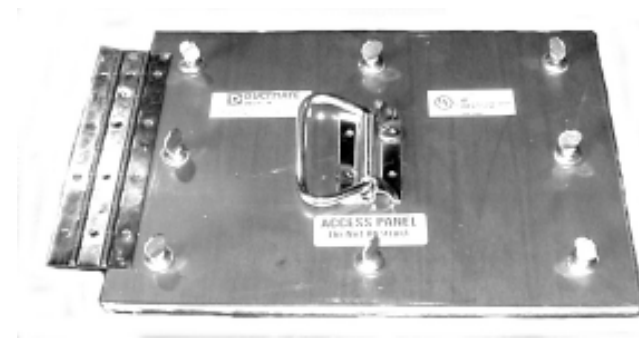


Access Door
GREASE DUCT



ULTimate Door II™

W E L D O N



U.L. Rated Grease Duct Door

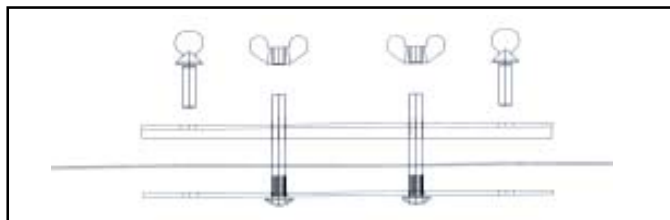
Easy to Install Sandwich Design / Weld On Design

- UL 1978 Listed
- Dramatically reduces installation time
- No Special tools required
- Union Made in the U.S.A.
- Available in a variety of sizes
- Grease and air tight
- Meets NFPA 96 standards
- Meets all mechanical codes



DUCTMATE®
Industries, Inc.

ULtimate Door



DESCRIPTION

Access Door for grease duct or high temperature applications

BASIC USE

To provide easy access into high temperature air ducts and grease duct systems. This door was designed for applications requiring a UL 1978 Listing.

SPECIAL CHARACTERISTICS

- UL 1978 Listed
- No special tools required
- Minimal Penetration into the duct
- Dramatically reduces installation time
- No welding required
- Grease and air tight
- Meets NFPA 96 Standards
- Meets all mechanical codes
- Union Made in the U.S.A.
- Available in a variety of sizes
- Patent Pending
- Door is completely removed for easy cleaning
- Can be used with all types of high temperature insulation
- No need for any clips
- No need for any drilling
- Unique collapsible handle design for easy installation

TECHNICAL INFORMATION

PANELS

The Ultimate Access Door consist of two layers of 11 gauge metal (Available in Black Iron or Stainless 304).

GASKET

High Temperature ceramic board, rated to 2300°.

FASTENERS

Zinc plated studs are welded to the inner door. One thumb bolt in each corner (all sizes).

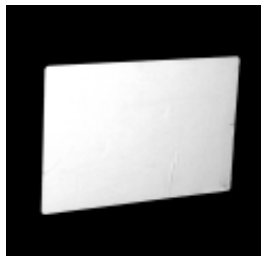
TEMPLATE

Self adhesive template is provided for the exact size of duct opening required.

PRODUCT GUARANTEE

All component parts of ULtimate Door are guaranteed against defective material and workmanship.

INSTALLATION INSTRUCTIONS



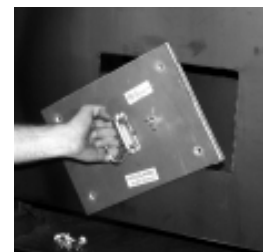
1. Peel backing off template and apply to duct in desired location.



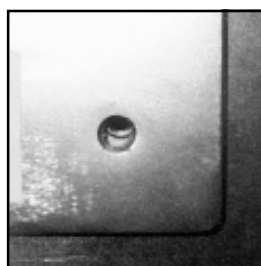
2. Cut around edge of template.



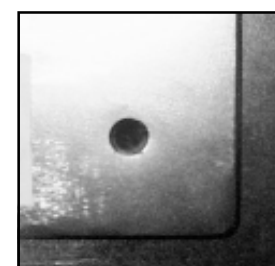
3. Remove the four thumb bolts from the corners of the door, and loosen the wing nuts but do not remove wing nuts.



4. Insert the door into the opening at an angle and then center the door.



4a. NOT CENTERED
If you can see the wall of the duct through any of the corner holes, then it is not centered.



4b. CENTERED



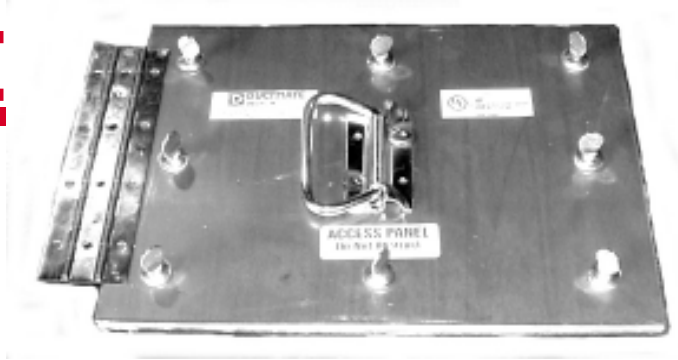
5. Tighten wing nuts and thumb bolts with washers in corner holes.



*If using a 6" sandwich door, all thumb screws and one wingnut must be removed. Insert the door into the opening at an angle and then center the door. Install wingnut & thumbscrews.

ULtimate Door II

W E L D O N



FEATURES

- UL 1978 Listed
- Available with optional hinge
- No special tool to remove
- Minimal penetration into the duct
- Dramatically reduces installation time
- Grease and airtight
- Meets NFPA 96 standards
- Meets all mechanical codes
- Union Made in the U.S.A.
- Available in a variety of sizes
- Patent pending
- Can be used with all types of high temp. duct wrap
- No need for any clips
- No need for any drilling
- Unique collapsible handle design for easy installation

TECHNICAL INFORMATION

PANELS

The Ultimate II Access Door consists of two layers of 11 gauge metal (Available in Black Iron or Stainless 304).

GASKET

High Temp. ceramic board, rated to 2300°

FASTENERS

Zinc plated thumb bolts

TEMPLATE

Self Adhesive template is provided for the exact size of duct opening required

UL DOOR INSULATION PLATE

(sold separately or as a kit)
Manufactured from 11 gauge black iron

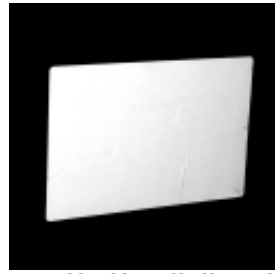
UL DOOR INSULATION HARDWARE

(sold separately or as a kit)
Consist of 4, 8" extension studs, washers, wing nuts, Do Not Obstruct sticker, and installation instructions.

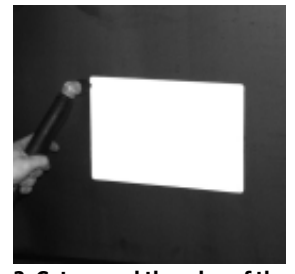
PRODUCT GUARANTEE

All component parts of ULtimate Door II are guaranteed against defective material and workmanship.

INSTALLATION INSTRUCTIONS



1. Peel backing off template and apply to duct in desired location.



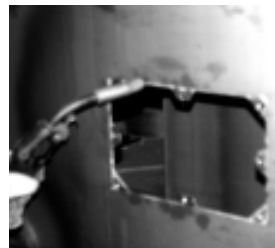
2. Cut around the edge of the template.



3. Remove the bolts and separate door from frame.



4. Center the frame around the opening.



5. Attach with tack welds 2" apart.



6. "Installed Frame"



7. Install thumbscrews with washers.



8. For hinged door, position hinge on duct wall and plug weld.



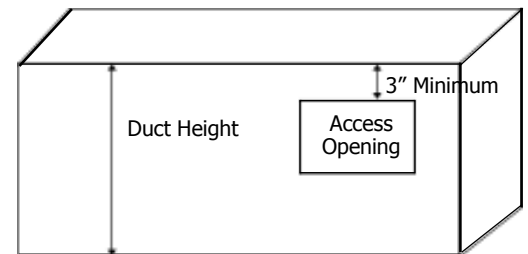
*If using the frame on the outside of the duct, a continuous liquid tight weld is required. Care should be taken to not warp the frame when welding.

Ultimate Door Packaging Info and Sizing Guidelines

***INSERT S4 FOR STAINLESS STEEL AND BI FOR BLACK IRON**

Part #	DESCRIPTION	OPENING SIZE	DOOR SIZE	MINIMUM DUCT HEIGHT	PACKAGING QUANTITY	WEIGHT
D66UL*	UL Door Only	6"x6"	8"x8"	14"	5	22.5 lbs.
D66ULWS*	UL Door with Insulation Kit and 12 x 12 Outer plate	6"x6"	8"x8"	14"	5	25 lbs.
D106UL*	UL Door Only	10"x6"	12"x8"	15"	5	37.5 lbs.
D106ULWS*	UL Door With Insulation Kit and 16 x 12 Outer Plate	10"x6"	12"x8"	15"	5	40.8 lbs.
D1010UL*	UL Door Only	10"x10"	12"x12"	20"	5	55.3 lbs.
D1010ULWS*	UL Door With Insulation Kit and 16 x 16 Outer Plate	10"x10"	12"x12"	20"	4	65.5 lbs.
D128UL*	UL Door Only	12"x8"	14"x10"	19"	4	42.8 lbs.
D128ULWS*	UL Door With Insulation Kit and 18 x 14 Outer Plate	12"x8"	14"x10"	19"	4	47.2 lbs.
D1814UL*	UL Door Only	18"x14"	20"x16"	28"	2	48 lbs.
D1814ULWS*	UL Door With Insulation Kit and 24 x 20 Outer Plate	18"x14"	20"x16"	28"	2	56.3 lbs.
D2020UL*	UL Door Only	20"x20"	22"x22"	36"	1	35 lbs.
D2020ULWS*	UL Door With Insulation Kit and 26 x 26 Outer Plate	20"x20"	22"x22"	36"	1	46.7 lbs.
D2418UL*	UL Door Only	24"x18"	26"x20"	34"	1	38 lbs.
D2418ULWS*	UL Door With Insulation Kit and 30 x 24 Outer Plate	24"x18"	26"x20"	34"	1	50.5 lbs.
ULINSULKIT	Kit 1: Four 8" extension studs, washers, wing nuts. Do not obstruct sticker and installation instructions.				5	1.12 lbs.
OP_UL* INSERT SIZE	Kit 2 UL Door Outer Plate				1	consult factory

In order to use the minimum duct height, the door must be installed with its longest dimension running horizontally along the length of the duct. If the minimum duct height is used, the top of the opening must be 3" from the top of the duct. For every inch over the minimum duct height, the opening can be lowered 1" from the top of the duct.



Ultimate Door II Packaging Info and Sizing Guidelines

WELD ON

***INSERT S4 FOR STAINLESS STEEL AND BI FOR BLACK IRON**

Part #	DESCRIPTION	OPENING SIZE	DOOR SIZE	MINIMUM DUCT HEIGHT		PACKAGING QUANTITY	WEIGHT
				Welded Seam	Pitts Lock		
DW66UL* DWH66UL*	UL Door Only	6"x6"	8"x8"	8"	9"	5	22.5 lbs.
DW66ULWS* DWH66ULWS*	UL Door with Insulation Kit and 12 x 12 Outer plate	6"x6"	8"x8"	8"	9"	5	25 lbs.
DW106UL* DWH106UL*	UL Door Only	10"x6"	12"x8"	8"	9"	5	37.5 lbs.
DW106ULWS* DWH106ULWS*	UL Door With Insulation Kit and 16 x 12 Outer Plate	10"x6"	12"x8"	8"	9"	5	40.8 lbs.
DW1010ULWS* DWH1010UL*	UL Door Only	10"x10"	12"x12"	12"	13"	5	41.8 lbs.
DW1010ULWS* DWH1010ULWS*	UL Door With Insulation Kit and 16 x 16 Outer Plate	10"x10"	12"x12"	12"	13"	4	54.6 lbs.
DW128UL* DWH128UL*	UL Door Only	12"x8"	14"x10"	10"	11"	4	42.8 lbs.
DW128ULWS* DWH128ULWS*	UL Door With Insulation Kit and 18 x 14 Outer Plate	12"x8"	14"x10"	10"	11"	4	47.2 lbs.
DW1814UL* DWH1814UL*	UL Door Only	18"x14"	20"x16"	16"	17"	2	48 lbs.
DW1814ULWS* DWH1814ULWS*	UL Door With Insulation Kit and 24 x 20 Outer Plate	18"x14"	20"x16"	16"	17"	2	56.3 lbs.
DW2020UL* DWH2020UL*	UL Door Only	20"x20"	22"x22"	22"	23"	1	35 lbs.
DW2020ULWS* DWH2020ULWS*	UL Door With Insulation Kit and 26 x 26 Outer Plate	20"x20"	22"x22"	22"	23"	1	46.7 lbs.
DW2418UL* DWH2418UL*	UL Door Only	24"x18"	26"x20"	20"	21"	1	38 lbs.
DW2418ULWS* DWH2418ULWS*	UL Door With Insulation Kit and 30 x 24 Outer Plate	24"x18"	26"x20"	20"	21"	1	50.5 lbs.
ULINSULKIT	Kit 1: Four 8" extension studs, washers, wing nuts. Do not obstruct sticker and installation instructions.					5	1.12 lbs.
OP_UL* INSERT SIZE	Kit 2 UL Door Outer Plate					1	consult factory

Unlike the Ultimate sandwich style door, the ULtimate II weld-on door requires no additional clearance. The duct only needs to be large enough to accommodate the frame. The frame extends 1" past each side of the opening, therefore a minimum of 1" clearance is required on each side of the opening when duct incorporates a welded longitudinal seal. To allow for manufacturing variances in the duct 1-1/2" clearance is recommended on each side of the opening when duct incorporates a Pittsburgh lock seam. Remember that an internal longitudinal seam could take up extra space and prevent the frame from properly attaching in the case of a minimum size duct. In order to use the minimum duct height, the door must be installed with its longest dimension running horizontally along the length of the duct.

